

# Autism Map Maker



Non-profit Resource Center & Bridge School for Deaf, Hard of Hearing,  
and Non-Speaking Students on the Spectrum

## Workshops & Consulting Services

# Services

## Workshops

## Consulting

Navigating a child's unique blueprint can feel overwhelming. This guide isn't just a list of services; it's a map to a more connected, empathetic, and effective approach. Here, you will find the tools to move from reacting to "behaviors" to understanding a complete, whole-child system.

**02**

### Foundational Toolkit

Half-Day Workshop

**04**

### DeafAutism Deep Dive

Full-Day Workshop:

**06**

### Foundational Student

2-Day Intensive Consultation

**08**

### Deep Dive

5-Day Intensive Consultation

**10**

### Classroom Intensive

5-Day Intensive Consultation

# Stop Guessing, Start Building.

To: School Administrators & Special Education Directors From:  
Savy Hester, Director at Map Maker

You have a student who has the team stuck.

You've received conflicting advice from specialists—some who understand deafness, and others who understand autism. But rarely do they understand the complex, compounding reality of both. Your team is managing crises, not building skills. The core issue—the profound impact of language deprivation, the autistic neurology, and the co-occurring barriers (ID, RAD, ADHD, PTSD)—is being missed.

Our work is different. We are not surface-level coaches. We are partners as we work with your team to find root causes and practical, actionable tools to support your students AND staff.

Our team has the deep, real-world experience to stand firm, untangle this complex knot, and provide real help. We don't just "manage" behavior. We analyze the child's entire "operating system," identify the true barrier, and build a logical, step-by-step plan that addresses the cause, not just the symptom.

**WE DO NOT CREATE DEPENDENCY. WE BUILD YOUR TEAM'S CAPACITY.**

Our goal is to work ourselves out of a job. We don't just give you a fish; we teach you how to fish. We end every consultation by handing you the "keys"—a complete, editable digital toolkit of the real-photo materials and plans we built alongside you and your team.

Your team is then empowered, trained, and legally able to alter, customize, and reuse these materials for new students, building your school's internal resources for years to come. This is not a "one-off" service. It is a permanent investment in your staff.

A handwritten signature in dark blue ink that reads "Savy Hester". The signature is written in a cursive, flowing style with a large initial 'S' and a distinct 'H'.

# Foundational Toolkit Workshop

Half Day Workshop

It's exhausting. You're navigating a world of constant "system alerts"—the meltdowns, shutdowns, and confusing behaviors that leave you and your team feeling reactive and disconnected. You know there's a brilliant child in there, but you're stuck managing behaviors instead of building connection.

The truth is, it's not "bad behavior." It's communication.

Your child's nervous system is sending you "error messages" of sensory overload, language gaps, or processing lag. This workshop gives you the Foundational Toolkit to understand what these signals truly mean. We provide the gentle reframe you need to move from reacting to responding, calming the entire system—starting with your own.



## **The Problem We Solve:**

Teams and families are overwhelmed and don't know where to begin. They need a "quick start" guide of tools that work for both home and school, creating immediate consistency for the child.

## **Our Training Philosophy:**

This is not a passive lecture. It is a 3-hour intensive build. We give you the "why," but we spend our time on the "how." You will leave with tools you can use the same day.

## **Core Modules**

- **A Practical Diagnostic Lens:** Learn our core framework for identifying if a child's behavior stems from sensory overload, emotional distress, or a communication breakdown, allowing you to respond effectively.
- **Co-Regulation Techniques:** Master specific, calming strategies to help a distressed child regulate their nervous system and return to a state of learning.
- **Building Predictable Routines:** Learn a simple method to break down any task (like getting ready for school or bedtime) into manageable steps to create predictable daily routines.
- **Essential Visual Supports:** Learn to create and use powerful visual tools with real photos—and understand why they are more effective than line drawings for this population.

# The truth Practical Applications

## What Your Team Receives:

- One (1) 3-Hour On-Site Interactive Workshop: An intensive, hands-on training session for up to 30 attendees.
- One (1) "Foundation Toolkit" Digital File:
  - Value for Administration: Every attendee receives a digital file with editable templates for the tools we build in the workshop (e.g., "first/then" boards, rule cards, schedule templates). Your staff can immediately start customizing and implementing these tools, saving time and resources.



Children, especially Deaf and Autistic children, are masters at reading their environment. Their systems instantly "read your system logs" through your micro-expressions and posture. When you are anxious, you inadvertently send a "threat signal". When you are grounded, you become a safe, stable anchor they can use to find calm. This workshop teaches you how to become that anchor.

Ready to Build Your Toolkit? This half-day workshop is the first step to building a more peaceful and connected environment.

**Price:** \$2,000 + (additional attendees if needed) + Travel Expenses

**Visit [www.autismmapmaker.org](http://www.autismmapmaker.org) for more information. Contact [Savy@AutismMapMaker.org](mailto:Savy@AutismMapMaker.org) to schedule a workshop or request more specified training.**

# Sign Dependent ASD Deep Dive

## Full-Day Workshop

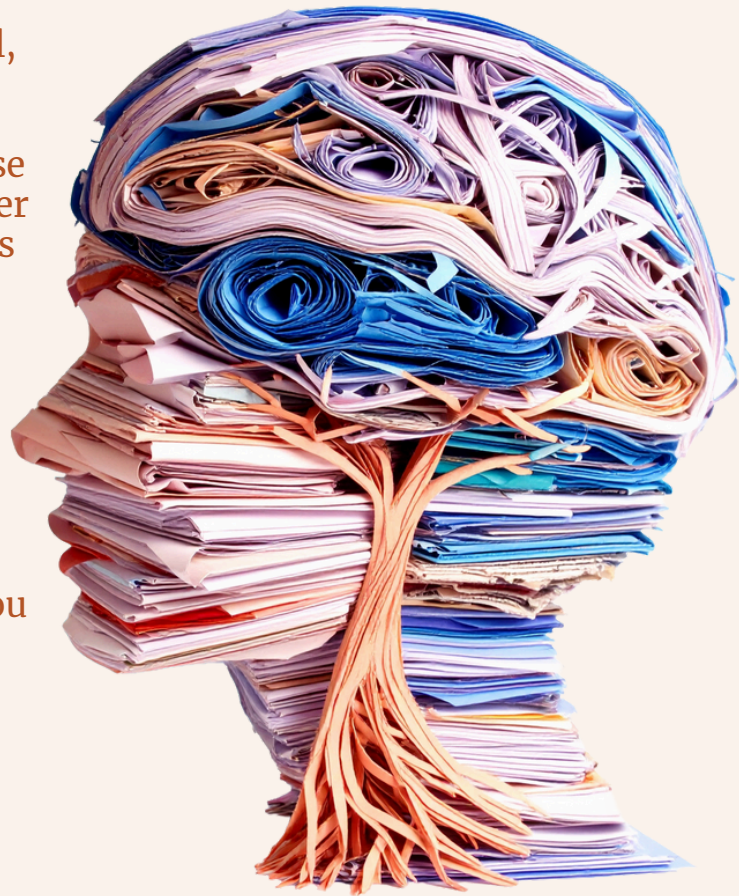
**Best For:** Specialized teams (Deaf Ed, Autism, Admin, Psychologists) and families facing complex, multi-faceted challenges who need advanced diagnostic skills.

**The Problem We Solve:** The "Foundation" tools aren't enough. The team is struggling with co-occurring conditions (ADHD, PTSD, ID) and needs to understand the why at a much deeper level.

**Our Training Philosophy:** This is a full-day clinical workshop. The morning is for advanced diagnostics; the afternoon is a hands-on problem-solving clinic. We teach you our process.

## Workshop Agenda

- **Advanced Diagnostics:** Learn the critical, non-negotiable skill of differentiating behaviors caused by gaps in language access (language deprivation) from those related to core autistic neurology or other co-occurring barriers. This distinction is the key to effective intervention.
- **Building a Unified Team:** We provide a framework for parents and educators to bridge environmental mismatches and align strategies.
- **Real-Time Case Study Workshop:** The entire afternoon is a hands-on clinic. You bring your most complex cases. We will collaboratively analyze the barriers and build expert-guided, step-by-step intervention plans for your specific students.



## THE DELIVERABLE: EXPERT DIAGNOSTIC SKILLS & REAL-WORLD SOLUTIONS

This workshop provides a level of specialized training unavailable in most professional development. Your team will leave with the ability to analyze, diagnose, and create solutions internally.

### What Your Team Receives:

- One (1) 6-Hour On-Site Clinical Workshop: A full-day, expert-led training for up to 30 attendees.
- One (1) "Advanced Toolkit" Digital File:
  - Value for Administration: Includes all foundational templates plus advanced diagnostic trackers, differentiation guides, and editable templates. This file becomes a permanent resource for your district's specialized teams.
- Real, Tangible Plans: Your team will leave with expert-guided, written plans for the specific students you are struggling with right now.



Ready to Build Your Toolkit? This full-day workshop is the first step to building a more peaceful and connected environment.

Price: \$3,600 + Travel Expenses

Visit [www.autismmapmaker.org](http://www.autismmapmaker.org) for more information. Contact [Savy@AutismMapMaker.org](mailto:Savy@AutismMapMaker.org) to schedule a workshop or request more specified training.

# Foundational Student

2 Day Consultation on-site

**Best For:** A single student with complex needs who has the entire educational team "stuck."

## **The Problem We Solve:**

The team has tried everything. The behavior plan is failing. There is constant confusion about whether the barrier is hearing access, autistic neurology, behavioral defiance, or language deprivation. The team is exhausted and needs a clear, unified plan from an expert who understands all facets of the child's profile.

## **Our Process: Diagnosis & Implementation**

### **DAY 1: THE DIAGNOSTIC DEEP DIVE**

**Intensive Observation:** We spend the day observing the student across all environments to identify the true barrier. We look for patterns. Is this a sensory overload issue (CPU Overheating)? A communication breakdown (Corrupted File)? A transition failure (System Lag)?

**Team & Family Data-Mining:** We meet with the full team—teacher, SLP, OT, admin, and paras—as well as the student's family to gather a 360-degree view of the child's operating system.

### **DAY 2: TOOLKIT IMPLEMENTATION & TEAM TRAINING**

**Customized Toolkit Delivery:** We return with a customized, real-photo, editable toolkit (schedules, rule cards, communication systems, regulation supports) built specifically from our Day 1 diagnosis.

**Hands-On Staff Training:** We do not "lecture." We spend the entire day side-by-side with your staff, in the classroom, teaching them how to use these new tools. We model the strategies, co-teach with the teacher, and provide in-the-moment coaching to paras, building their confidence and competence.

## THE DELIVERABLE: A PERMANENT, EDITABLE TOOLKIT

When you invest in this consultation, you are purchasing a permanent, long-term asset for your school. This is a foundational investment in your team's capacity.

### What Your School Receives:

- One (1) 2-Day On-Site Expert Consultation: Two full days of on-site diagnostic and implementation work from a Deaf & Autism specialist.
- One (1) Comprehensive Diagnostic Report: A "no-fluff" report that clearly identifies the student's primary barriers, explains the "why" behind their behavior, and provides a clear, step-by-step plan for intervention.
- One (1) Complete, Editable Digital Toolkit: This is the key. You will receive a complete digital file (e.g., Google Slides, PowerPoint) of the custom visual schedules, real-photo rule cards, social narratives, and regulation-plan materials we created.
  - Value for Administration: Your team is explicitly granted permission to alter, copy, and reuse these templates for other students, building your school's internal capacity and saving thousands in future resource creation.
- One (1) 2-Hour Virtual Follow-Up: A scheduled follow-up call to troubleshoot implementation, analyze data, and ensure long-term success.



Price: \$4,250 + Travel Expenses

Visit [www.autismmapmaker.org](http://www.autismmapmaker.org) for more information. Contact [Savy@AutismMapMaker.org](mailto:Savy@AutismMapMaker.org) to schedule a workshop or request more specified training.

# Student Deep Dive

5-Day Consult

**Best For:** One or two students with highly complex, co-occurring conditions (e.g., DeafAutism + ID, PTSD, or RAD) who require a complete environmental and programmatic build-out.

**The Problem We Solve:** The student is in a constant state of crisis. The environment is not safe for them or for others. The team is exhausted, and basic strategies are not enough. A full system reset and a new, specialized program are needed from the ground up.

## Our Process: The 5-Day Immersion

**DAYS 1-2: Diagnostic & System Scaffolding** We conduct deep observations to identify primary barriers. We then work side-by-side with your staff to immediately begin building the necessary environmental scaffolds (e.g., a functional Safe Place, visual boundaries, communication-rich zones).

**DAY 3: Intensive Staff Training & Material Customization** We train the team on the "how" and "why" of our framework. We build the extensive, editable toolkit with your staff, teaching them our diagnostic process so they can replicate it.

**DAY 4: Generalization & Parent Training** We take the new skills and tools into other environments—cafeteria, playground, specials—to ensure skills generalize. This day includes an extended parent-coaching session to build a powerful home-school bridge.

**DAY 5: Fading & Sustainability Plan** We intentionally fade our support and observe your staff implementing the full plan independently. We provide real-time coaching and feedback, ensuring they are confident and competent to continue the work long after we leave.

## THE DELIVERABLE: A MASTERED SYSTEM & CONFIDENT STAFF

This service is an investment in transforming a high-crisis placement into a functional, supportive, and safe learning environment. You are training your staff to become in-house experts.

### Spotlight: Autonomy & Self-Advocacy—The Ultimate Goal

What Your School Receives:

- One (1) 5-Day Immersive On-Site Consultation: A full week of expert-led system building, staff training, and hands-on implementation.
- One (1) Highly Detailed Report & Sustainability Plan: A comprehensive diagnostic report plus a long-term plan for fading supports and building independence.
- One (1) Complete, Editable Digital Toolkit: An extensive library of custom-built, real-photo, routines, schedules, and choice boards.
  - Value for Administration: This editable file becomes a foundational resource for your classroom or program, ready to be adapted for new students with complex needs.
- Two (2) 1-Hour Virtual Follow-Ups: Scheduled check-ins at 2 and 6 weeks post-visit to ensure implementation fidelity and lasting success.



Price: \$6,500 + Travel Expenses

Visit [www.autismmapmaker.org](http://www.autismmapmaker.org) for more information. Contact [Savy@AutismMapMaker.org](mailto:Savy@AutismMapMaker.org) to schedule a workshop or request more specified training.

# Classroom Intensive

5 Day Consultation on-site

**Best For:** A self-contained classroom (3-8 focus students) that needs a full system implementation and team-wide training. This is our "train-the-trainer" model.

## **The Problem We Solve:**

A teacher has a classroom of students with diverse, high-level needs and is struggling to meet them all. A rotating staff of paraprofessionals with varying skill levels leads to inconsistency, burnout, and a constant state of putting out fires.



## **Our Process: The 5-Day Team-Build**

This service focuses on building systems, not just supporting individual students.

### **DAYS 1-2: Systems Analysis & Environmental Setup**

We analyze classroom flow, staff deployment, and group routines. We work with the team to physically set up a classroom environment built for Deaf/Autistic learners (visuals, center-based schedules, communication-rich zones).

### **DAYS 3-4: Differentiated Toolkit Creation & Staff Training**

We teach the staff how to differentiate materials for the various needs in the room. We build editable toolkits for the group (e.g., a "Morning Routine" template) and then modify them for each of the focus students. This teaches your staff the critical skill of "zooming out" (group) and "zooming in" (individual).

### **DAY 5: The "Classroom Playbook" & Sustainability**

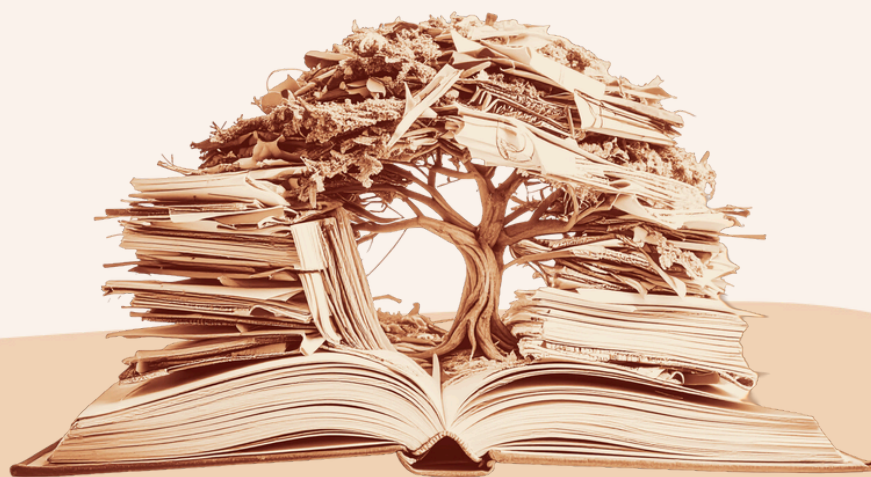
We deliver a "Classroom Playbook"—a simple, visual guide for the teacher, paras, and substitutes—on how to run the new systems.

# Classroom Intensive

5 Day Consultation on-site

## THE DELIVERABLE: A TRAINED STAFF & A SELF-SUFFICIENT CLASSROOM

This service provides a permanent operational upgrade for your most complex classrooms. You are investing in a system that will outlast student and staff changes.



### What Your School Receives:

One (1) 5-Day On-Site Classroom Consultation & Team-Wide Training.

One (1) Comprehensive "Classroom Playbook": A visual, operational guide for all current and future staff (e.g., substitutes, new paras) on how to run the classroom, ensuring stability and consistency year after year.

One (1) Master Editable Digital Toolkit: A library of classroom-wide templates (e.g., "Centers," "Morning Meeting") and individualized materials for all focus students.

Value for Administration: This becomes your classroom's permanent asset, allowing you to onboard new staff efficiently and adapt for new students every year.

Two (2) 1-Hour Virtual Follow-Ups: Team check-ins to refine the system.

**Price:** Starts at \$7,200 (for 3 focus students) \$350 per additional student (up to 8) + travel

Visit [www.autismmapmaker.org](http://www.autismmapmaker.org) for more information.

Contact [Savy@AutismMapMaker.org](mailto:Savy@AutismMapMaker.org) to schedule a workshop or request more specified training.

## **OUR MISSION IS YOUR FUTURE**

**These services are not just our business; they are the engine for our mission.**

**Every consultation and workshop booked directly funds our application for 501(c)(3) nonprofit status.**

**Our ultimate goal is to establish a dedicated school and satellite support centers for the Deaf/Autistic community. When you invest in your team, you are also investing in a future where every child has a place designed for them to thrive.**

**READY TO BUILD? LET'S TALK.**

**Schedule a call to discuss your specific needs and goals.**

**Savy Hester   Savy@AutismMapMaker.org   580.930.1204**

**[www.AutismMapMaker.org](http://www.AutismMapMaker.org)**

**(Visit our website for free resources, including the Survival Guide framework)**